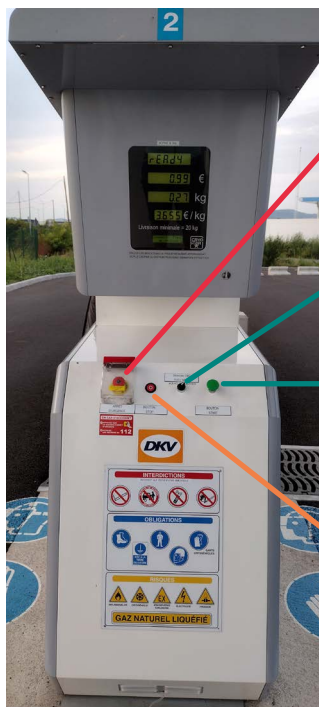




GNVERT

LNG user guide

Safety devices



The emergency stop button

Switches off the station's electric power supply and closes the automatic valves at the inlet and outlet of the station.

The "VOLVO/AUTRES" (VOLVO/ OTHER) switch

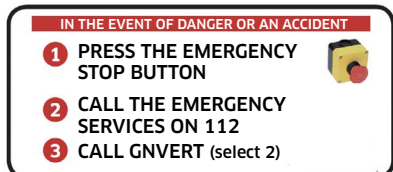
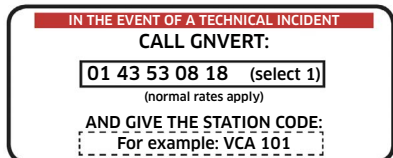
Select according to the make of vehicle, prior to the filling cycle.

The "START" and "HOMME MORT" (DEAD MAN) button

Every time the signal sounds, press the "START" and "HOMME MORT" (DEAD MAN) buttons on the pump to fill up the vehicle.

The "STOP" button

Stops the flow of LNG before the tank is completely full.



In the event of a technical incident

Call **01 43 53 08 18**
(select 1)
and give the station code

In the event of danger or an accident

Press the emergency stop button and call the emergency services on **112**. Then call **01 43 53 08 18** (select 2) and give the station code (for example, VCA 101)

Rules in the station



No smoking



Do not leave
the engine
running



Do not use your
telephone



No heat sources



Close all doors
and windows

Mandatory protective equipment



Cryogenic gloves

for skin protection, in the event of contact with the liquid fuel at -160°C and with certain very cold metal parts when filling up:

risk of cold burns



A visor or a cap with a visor

for protection against splashes:

risk of cold burns



Clothes that cover the arms and legs

for skin protection, in the event of contact with the liquid fuel at -160°C and with certain very cold metal parts when filling up:

risk of cold burns



Enclosed or closed-toe shoes

for skin protection, in the event of contact with the liquid fuel at -160°C :

risk of cold burns



The vehicle must be earthed

to dissipate electrostatic charges when filling up with LNG in order to avoid starting a fire:

fire hazard

Read and strictly follow the instructions for filling shown on the pump

Instructions for filling



1 Switch off the engine, close the doors and windows of the vehicle and put on the PPE.



2 Earth the tank.



3 Select the filling mode according to the make of vehicle via the switch on the Dispenser: "VOLVO/AUTRES" (VOLVO/OTHER).

Note: The Dispenser displays "READY" and "Connecter flexible au véhicule" (Connect hose to vehicle).



4 Dry and clean the two tank fittings on the vehicle (LNG and vent) using a compressed air blower or a cloth.

Instructions for filling



Use both handles on the LNG nozzle to detach it from the dispenser.



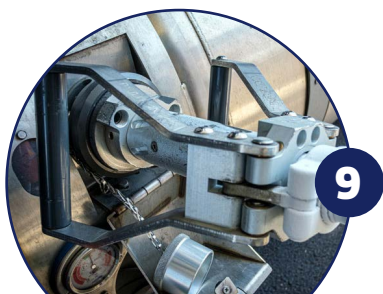
Dry and clean the filler nozzle with compressed air or a cloth.



Position the LNG nozzle in front of the vehicle filler, aligned with the stops.



Insert the nozzle in the tank and rotate by one quarter of a turn to lock.



Connect the LNG nozzle by pushing the two handles forwards.

Instructions for filling

10



If the vehicle is equipped with a vent nozzle: Detach the vent nozzle from the dispenser and connect it to the tank by aligning both stops and rotate it by one quarter of a turn. Then, open the "grey" valve on each of the vehicle's tanks.

Note: If the tank does not include a vent nozzle, skip this step.

11

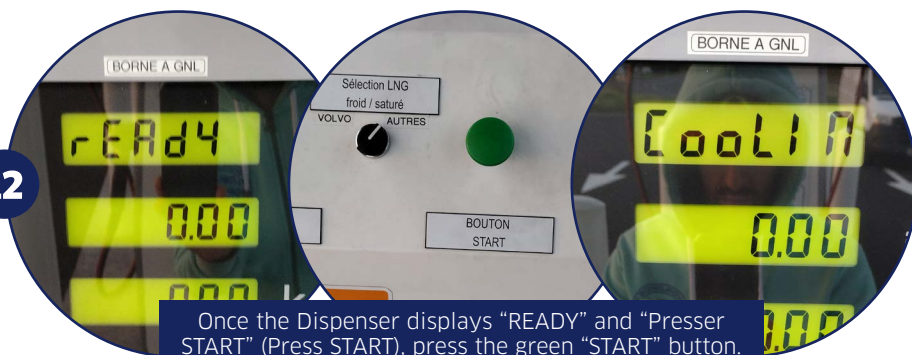


Once the pump displays "Attente autorisation" (Waiting for authorisation), identify yourself with your badge and follow the instructions on the screen.

Note: Once these steps are validated, confirm the filling of the tank with the Dispenser using your badge.

Instructions for filling

12



Once the Dispenser displays "READY" and "Presser START" (Press START), press the green "START" button.

Note: After pressing "START", the Dispenser displays "COOLING" and a countdown is begins. The cooling period is automatically established and varies according to the pump's temperature setting.

13



If depressurisation is required (tank pressure greater than 10.5 bar), the Dispenser will display "VENTING".

Wait until the Dispenser displays "Presser START" (Press START), and press on the green "START" button.

Note: The "VENTING" operation ends once the pressure reaches the green zone of the tank's pressure gauge.

Instructions for filling



Whenever sound signals are given or the “0” symbols gradually disappear, press the green “START” button on the Dispenser to prove that you are present and paying attention.



Wait until the screen displays “ENDING” before detaching the nozzle.

Note: At the end of the filling cycle, a “REFUELLING” step may be required to properly complete the refuelling process.

It is important to wait until “ENDING” is displayed before detaching the nozzle.



Disconnect the nozzle by pulling back the two handles simultaneously. Wait for 3 seconds, then rotate the nozzle by one quarter of a turn to disconnect it from the vehicle.

Instructions for filling



17

Put the LNG nozzle back on its support on the Dispenser, and do the same for the vent nozzle.



18

Remove the earthing clamp and close the grey vent valve of the tank.



19

If you have requested a receipt, swipe your badge again to receive the receipt.

Protection and Safety



Personal protective equipment is mandatory

The temperature of LNG is -160°C . Wear your PPE!

Traffic rules



Obey the rules applying to the movement of traffic in the station



The speed in stations is limited to 10 kph



Unauthorised persons are forbidden from entering the station on foot



No stopping or parking in the station



Check all blind spots before moving off in order to protect the safety of the technical personnel moving around the lanes



Stop at the “STOP” sign when leaving the station



The maximum headroom is shown in the station



GNVERT

Le Copernic II. Immeuble Neptune
1 rue Galilée. 93160 Noisy-Le-Grand, France

Tel.: +33 1 49 38 39 00 - Fax: +33 1 49 38 39 01
courrier.gnvert@engie.com

Visit us at:
<https://gnvert.engie-solutions.com>

Download your new GNVERT application available at:

