



# **GNVERT**

CNG user guide

# Safety devices



## Filler press-and-hold button

Meets a regulatory requirement, just like pulling and holding the trigger of liquid fuel filler nozzles.

**Locking the button in the pressed position with adhesive tape or any other object is strictly forbidden and in breach of the regulations.**

Doing so is dangerous and can result in being banned from using the station.

## The emergency stop button

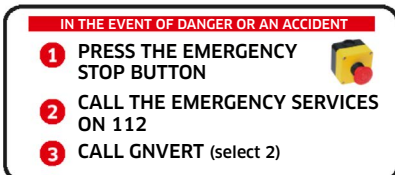
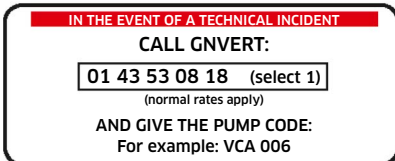
Only for use in the event of danger or an accident.

Switches off the pump's electric power supply and closes the automatic valves at the inlet and outlet of the pump.

## The break-away

A protective device that prevents the hose from breaking away.

**Requires the intervention of a qualified technician.**



## In the event of a technical incident:

Call **01 43 53 08 18** (select 1) and give the pump code

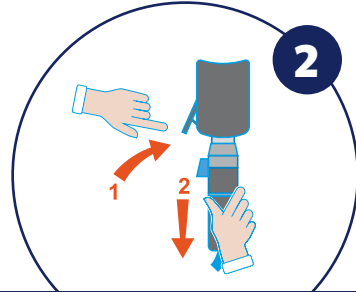
## In the event of danger or an accident

Press the emergency stop button and call the emergency services on **112**. Then call **01 43 53 08 18** (select 2) and give the pump code (for example, VCA 006)

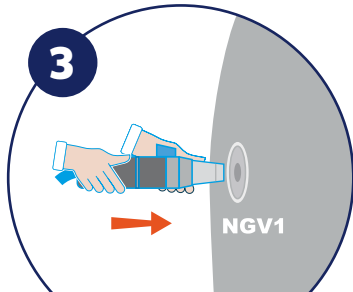
# Instructions for filling



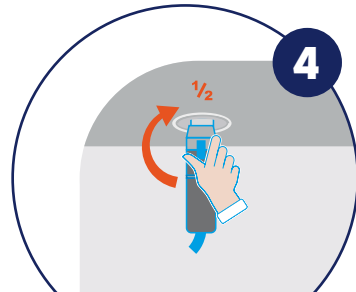
1 Identify yourself with your badge and follow the instructions on the screen



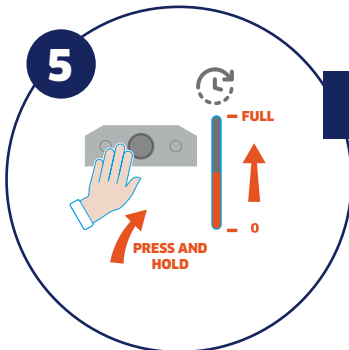
2 Press the lever to remove the nozzle from its support



3 Insert the end of the nozzle in the vehicle's filler inlet and push slightly



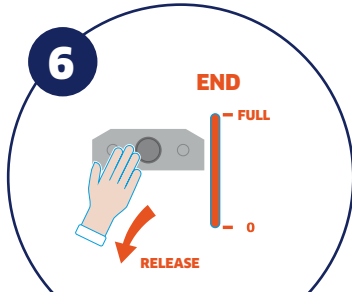
4 Open the nozzle valve by turning the blue handle by one half turn towards the vehicle



5 Press and hold the "DEAD MAN" button on the pump until the tank is full

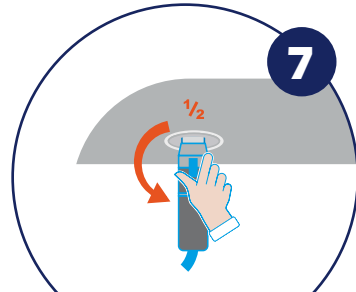
*Note: Pressing and holding this button is a regulatory requirement, just like pulling and holding the trigger of a liquid fuel filler nozzle. It is strictly forbidden to mechanically lock the button in the pressed position by mechanical means (adhesive tape, wedge, etc.).*

# Instructions for filling

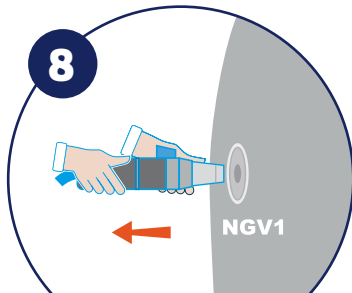


The pump stops automatically when the tank is full.

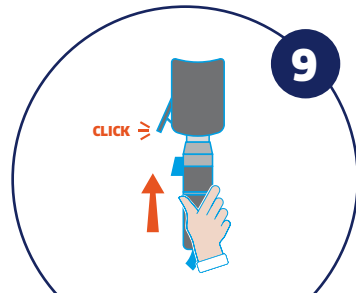
*Note: if the button is released for more than 3 seconds, the filling cycle stops before the tank is full*



Close the nozzle valve by turning the blue handle by one half turn. Wait 3 seconds for the nozzle to decompress



Remove the nozzle



Push the nozzle back onto its support until you hear a click

# Rules in the station



No smoking



Do not leave the engine running



Do not use your telephone



No heat sources



Close all doors and windows

# Traffic rules



Obey the rules applying to the movement of traffic in the station



The speed in stations is limited to 10 kph



Unauthorised persons are forbidden from entering the station on foot



No stopping or parking in the station



Check all blind spots before moving off in order to protect the safety of the technical personnel moving around the lanes



Stop at the "STOP" sign when leaving the station



The maximum headroom is shown in the station



## **GNVERT**

---

Le Copernic II. Immeuble Neptune  
1 rue Galilée. 93160 Noisy-Le-Grand, France

Tel: +33 1 49 38 39 00 - Fax: +33 1 49 38 39 01  
courrier.gnvert@engie.com

**Visit us at:**

<https://gnvert.engie-solutions.com>

**Download your new GNVERT application available at:**

